



HCP
HERTZ COMPACT POWER

PRODUCT INFORMATION

Elettromedia - September 2012

www.hertzaudiovideo.com



Product Information

Elettromedia - September 2012

HCP: the new Hertz entry-level electronics	03
HCP 1D	05
HCP 2	06
HCP 4	07
HCP 4D	09
HCP 5D	11
About us	13
Press Kit	14



For more information visit www.hertzaudiovideo.com

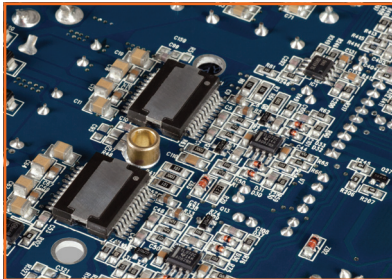


HCP, the new Hertz entry line!

Power, compact size and competitiveness: these are the goals upon which the **HCP** project is based, and is the essence of the line designation: **Hertz Compact Power**.

The Hertz design staff has employed all of their experience and know-how to provide the most suitable response to satisfy the needs of the first time enthusiast.

Minimized sizes have been achieved thanks to the use of both D and AB Class circuits. This range is highly versatile, and has comparably high power levels; all available in a line of very competitively priced models.



The **HCP** amplifiers boast innovation, character and tradition, all merged in a minimalist and, at the same time, appealing look.

A project born to uncomplicate what usually is complicated: with **Hertz Compact Power** even the most complex audio systems become easy to install.

The Hertz team has successfully conquered one more challenge: **to build entry-level products without compromise**, all in compliance with the traditional standards of the **Hertz** brand.

HCP: TECHNICAL FEATURES

The HCP heat sink has been crafted from **extruded aluminium**, a material unmatched for lightness, robustness and heat dissipation.

To keep size to a minimum, the power transistors are placed between the PCB and the top side of the heat sink where heat is gathered.

Built up heat is then directed to the special dissipation "wings" along the side of the amplifier.



The Front End section features a **complete and by-passable crossover system**, providing full system design flexibility with or without external processors. Filtered pre-amplified outputs along with multiple adjustments are offered on the HCP 1D, offering the user **endless connection possibilities** with any source.

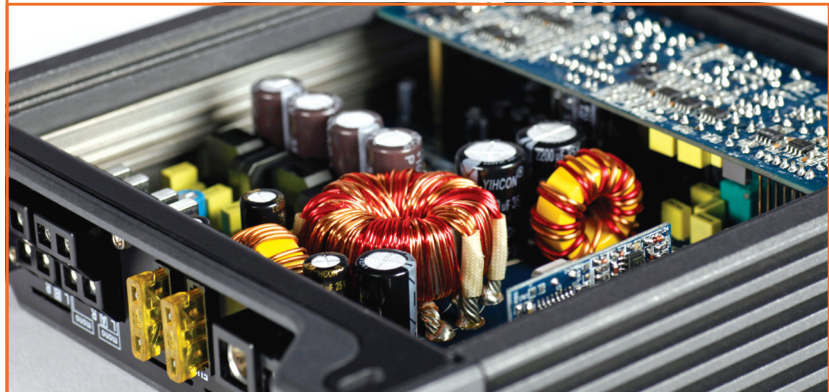
The inputs, of which the Hertz R&D is especially proud of, provide both RCA connection for pre-amplified (Pre-In) connection with aftermarket head units, and hi-level connections (Speaker-In) for connection with built-in factory head units.



Both **Pre-In and Speaker-In inputs** feature a **special balanced circuitry**, ensuring high rejection against electro-magnetic interferences typical of the in-car environment, guaranteeing noise-free results.

The Speaker-In inputs are equipped with **ART, Automatic Remote Turn-On/Off**, synchronizing the amplifier's turn-on/off according to the operational status of the source. This eliminates the need for a remote turn-on signal, which generally is not present on factory audio systems. The ART circuit, introduced by Hertz, ensures the amplifier's turn-on/off with no delays, eliminating annoying turn on/off pops. If required, this function can be manually disabled through a switch on the control panel. This is important in such cases where the factory head unit takes considerable time to turn-off, or when the amplifier's subsequent turn-on is controlled by actions such as opening doors. In these cases the ART function can be disabled and the remote input can be used through traditional methods, avoiding battery drain.

The **Hertz Compact Power** amplifiers crossover section ensure extreme flexibility: fully adjustable **Lo-pass, Hi-pass and Full range filters** are present with 12 dB/Oct. and 24 dB/Oct. slopes according to the amplifier model; **Bass Boost** is available to enhance low frequencies. More specifically, the HCP 1D mono amplifier features Hi-Pass pre-amplified outputs, providing the ability to create a Band-Pass on the front woofer. The HCP 4D four-channel model features an extended frequency range filter, which can be used when designing active 2-way speaker systems.



The HCP electronics feature a **power supply stage with multiple winding transformers and Low-ESR 105°C capacitors**. Working at higher efficiency, this ensures the energy required by the output stage in the D Class models (HCP 1D, HCP 4D and HCP 5D models) and in AB Class models (HCP 2 and HCP 4), also making them **stable into 2 Ω** loads providing maximum power.

With the HCP 1D and the subwoofer section of the HCP 5D, level can be remote controlled with the **HRC, Hertz Remote Control** accessory. Connected to the Remote Control plug, this provides extremely precise **volume level** from the comfort of your seat.

The HRC knob features a Center Detent, indicating the reference level. Level can be increased up to 6 dB or decreased to a full mute; you can always find the reference volume adjustment by returning the knob back to the Center Detent position.

AMPLIFIER

HCP 1D **1400 W**
MAX POWER

MONO D-CLASS AMPLIFIER WITH CROSSOVER



Power Supply

Power supply voltage / fuse:	11 ÷ 15 VDC / 2 x 25 A
Idling current (power ON/OFF):	1 A / 0.04 mA
Consumption @ 2 Ω, 14.4 VDC (Max Musical Power):	25 A
Remote In:	7 ÷ 15 VDC - 1 mA
ART:	Automatic Remote Turn-On/Off with Speaker-In

Amplifier Stage

Features:	
Distorsion - THD (100 Hz @ 4 Ω):	0.2 %
Bandwidth:	10 ÷ 22k Hz
S/N Ratio (A weighted @ 1 V):	100 dB
Damping factor (100 Hz @ 4 Ω):	80
Pre-In sensitivity:	0.6 ÷ 5 VRMS (15 kΩ)
Speaker-In sensitivity:	1.5 ÷ 12 VRMS (47 Ω)
Load impedance (MIN):	2 Ω

Output Power (RMS) @ 14.4 VDC, THD 1%:	
1 Ch:	320 W x 1 (4 Ω)
1 Ch:	550 W x 1 (2 Ω)

Output Power (RMS) @ 14.4 VDC, THD 10%:	
1 Ch:	380 W x 1 (4 Ω)
1 Ch:	700 W x 1 (2 Ω)

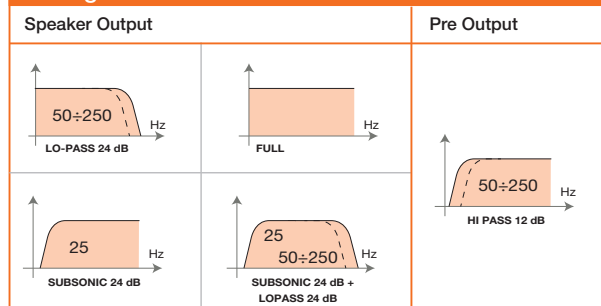
CEA 2006-A Ratings:		
RMS Power (4 Ω, ≤ 1 %THD + N, 14.4 V):		300 W x 1 Ch
S/N Ratio (ref. 1 W output):		80 dBA

Inputs / Outputs / Filter

INPUTS:	PRE IN / SPEAKER IN
Preout Hi-Pass:	50 ÷ 250 Hz @ 12 dB/Oct.
Filters FULL:	Yes
Lo-Pass:	50 ÷ 250 Hz @ 24 dB/Oct.
SUBSONIC (on/off):	25 Hz @ 24 dB/Oct.
BOOST 50 Hz (adjust):	(0 ÷ 12) dB
PHASE (adjust):	(0 ÷ 180) deg
Remote Volume Control (adjust):	(-50 ÷ 6) dB

1. Compact design built from an extruded aluminum heatsink with the top side ensuring effective transfer of the heat generated by the power electronic components.
2. Special balanced input circuitry to reject electro-magnetic disturbances present on the Pre-In or Speaker-In inputs.
3. Input featuring both Speaker-In (OEM radio) and RCA-In (Aftermarket radio) inputs.
4. Selectable ART, Automatic Remote Turn-On/Off function, automatically turns on and off the amplifier when the OEM radio turns on and off (available on Speaker-In only).
5. Power supply stage featuring multiple winding transformer, Low-ESR 105°C capacitors, D-Class 2 Ω stable.
6. Pre-out, also available when using Speaker level inputs, with continuously adjustable (50 to 250 Hz) Hi-Pass filter. Allows to create a Band-Pass filter with the front woofer amplifier to eliminate sub frequencies.
7. Selectable full range power output, for dual-mono powerful audio systems.
8. Bass Boost (50 Hz) adjustable to 12 dB, to increase the subwoofer punch.
9. 24 dB continuously adjustable (50 to 250 Hz) Lo-Pass filter.
10. SUBSONIC filter (24 dB - 25 Hz), removes very low subsonic frequencies from music signal to avoid damages to the subwoofer.
11. Continuously adjustable PHASE control (0 to 180°); it increases bass alignment of woofer with sub.
12. Optional Remote Volume Control (HRC); allows the user to adjust subwoofer level from dashboard.

Configurations



Size / Weight

Max size (mm / in.):	215 x 190 x 50 / 8.46 x 7.48 x 1.97
Weight (kg / lb.):	1,94 / 4.27

AMPLIFIER

HCP 2

**400 W
MAX POWER**

STEREO AMPLIFIER WITH CROSSOVER



Power Supply

Power supply voltage / fuse:	11 ÷ 15 VDC / 1 x 20 A
Idling current (power ON/OFF):	0.4 A / 0.04 mA
Consumption @ 2 Ω, 14.4 VDC (Max Musical Power):	12 A
Remote In:	7 ÷ 15 VDC - 1 mA
ART™:	Automatic Remote Turn-On/Off with Speaker-In

Amplifier Stage

Features:	
Distorsion - THD (100 Hz @ 4 Ω):	0.01 %
Bandwidth:	10 ÷ 65k Hz
S/N Ratio (A weighted @ 1 V):	103 dB
Damping factor (100 Hz @ 4 Ω):	200
Pre-In sensitivity:	0.6 ÷ 5 VRMS (15 kΩ)
Speaker-In sensitivity:	1.5 ÷ 12 VRMS (47 Ω)
Load impedance (MIN) @ 2 Ch:	4 Ω
@ 1 Ch:	2 Ω
Output Power (RMS) @ 14.4 VDC, THD 1%:	
2 Ch:	55 W x 2 (4Ω)
2 Ch:	85 W x 2 (2Ω)
1 Ch:	170 W x 1 (4Ω)
Output Power (RMS) @ 14.4 VDC, THD 10%:	
2 Ch:	65 W x 2 (4Ω)
2 Ch:	100 W x 2 (2Ω)
1 Ch:	200 W x 1 (4Ω)
CEA 2006-A Ratings:	
RMS Power (4Ω, ≤ 1 % THD + N, 14.4 V):	50 W x 2 Ch
S/N Ratio (ref. 1 W output):	82 dBA

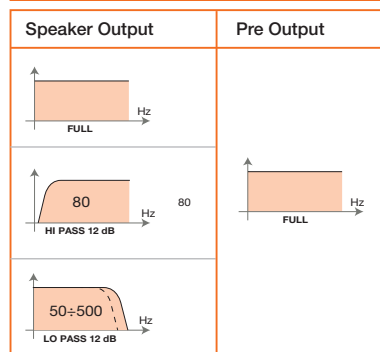


Inputs / Outputs / Filter

INPUTS:	PRE IN / SPEAKER IN
Pre out FULL range (FRONT):	Yes
Filters FULL:	Yes
Hi-Pass:	80 Hz @ 12 dB/Oct.
Lo-Pass:	50 ÷ 500 Hz @ 12 dB/Oct.
MONO (on/off):	Yes
BOOST 50 Hz (select):	(0 / 6 / 12) dB

1. Compact design built from an extruded aluminum heatsink with the top side ensuring effective transfer of the heat generated by the power electronic components.
2. Special balanced input circuitry to reject electromagnetic disturbances present on the Pre-amplified or Speaker level inputs.
3. Input featuring both Speaker-In (OEM radio) and RCA-In (Aftermarket radio) inputs.
4. Selectable ART™, Automatic Remote Turn-On/Off function, automatically turns on and off the amplifier when the OEM radio turns on and off (available on Speaker-In only).
5. Power supply stage featuring multiple winding transformer, Low-ESR 105°C capacitors, AB-Class 2 Ω stable.
6. Pre-out, also available when using Speaker level inputs.
7. Mono operation mode (selectable) to drive a subwoofer or, in combination with a second amplifier, for a powerful dual-mono system.
8. Bass Boost (50 Hz) selectable to 12 dB, to increase the subwoofer punch.
9. Lo-Pass (50 Hz to 500 Hz) and Hi-Pass (80 Hz) 12 dB crossover filters. The Hi-Pass fixed frequency filter ensures optimal coupling with sub amplifier.
10. Selectable full range power outputs.

Configurations



Size / Weight

Max size (mm / in.):	215 x 190 x 50 / 8.46 x 7.48 x 1.97
Weight (kg / lb.):	1,80 / 3.96

AMPLIFIER

HCP 4

**760 W
MAX POWER**

FOUR CHANNEL AMPLIFIER WITH CROSSOVER



Power Supply

Power supply voltage / fuse:	11 ÷ 15 VDC / 2 x 20 A
Idling current (power ON/OFF):	1 A / 0.04 mA
Consumption @ 2 Ω, 14.4 VDC (Max Musical Power):	21 A
Remote In:	7 ÷ 15 VDC - 1 mA
ART:	Automatic Remote Turn-On/Off with Speaker-In

Amplifier Stage

Features:	
Distorsion - THD (100 Hz @ 4Ω):	0.01 %
Bandwidth:	10 ÷ 45K Hz
S/N Ratio (A weighted @ 1 V):	103 dB
Damping factor (100 Hz @ 4 Ω):	120
Pre-In sensitivity:	0.6 ÷ 5 VRMS (15 k Ω)
Speaker-In sensitivity:	1.5 ÷ 12 VRMS (47 Ω)
Load impedance (MIN)@ 4 Ch:	2 Ω
@ 3 Ch:	2 Ω + 2 Ω + 4 Ω
@ 2 Ch:	4 Ω

Output Power (RMS) @ 14.4 VDC, THD 1%:

4 Ch:	55 W x 4 (4 Ω)
4 Ch:	85 W x 4 (2 Ω)
3 Ch:	55 W x 2 (4 Ω) + 170 W x 1 (4 Ω)
3 Ch:	85 W x 2 (2 Ω) + 170 W x 1 (4 Ω)
2 Ch:	170 W x 2 (4 Ω)

Output Power (RMS) @ 14.4 VDC, THD 10%:

4 Ch:	65 W x 4 (4 Ω)
4 Ch:	95 W x 4 (2 Ω)
3 Ch:	65 W x 2 (4 Ω) + 190 W x 1 (4 Ω)
3 Ch:	95 W x 2 (2 Ω) + 190 W x 1 (4 Ω)
2 Ch:	190 W x 2 (4 Ω)

CEA 2006-A Ratings:

RMS Power (4 Ω, ≤ 1 %THD + N, 14.4 V):	50 W x 4 Ch
S/N Ratio (ref. 1 W output):	82 dBA



Size / Weight

Max size (mm / in.):	315 x 190 x 50 / 12.40 x 7.48 x 1.97
Weight (kg / lb.):	2,62 / 5.77

1. Compact design built from an extruded aluminum heatsink with the top side ensuring effective transfer of the heat generated by the power electronic components.
2. Special balanced input circuitry to reject electromagnetic disturbances present on the Pre-amplified or Speaker level inputs.
3. Input featuring both Speaker-In (OEM radio) and RCA-In (Aftermarket radio) inputs.
4. Selectable ART, Automatic Remote Turn-On/Off function, automatically turns on and off the amplifier when the OEM radio turns on and off (available on Speaker-In only).
5. Power supply stage featuring multiple winding transformer, Low-ESR 105°C capacitors, AB-Class 2 Ω stable.
6. Pre-out, also available when using Speaker level inputs.
7. Mono operation mode (selectable) to realize a sub + front three-channel system, or a powerful two-channel system.
8. Bass Boost (50 Hz) selectable to 12 dB, to increase the subwoofer punch.
9. Lo-Pass (50 Hz to 500 Hz) and Hi-Pass (80 Hz) 12 dB crossover filters. The Hi-Pass fixed frequency filter ensures optimal coupling with sub amplifier, also providing the ability to realize a front + rear or a sub + front system.
10. Selectable full range power outputs.

Inputs / Outputs / Filter

INPUTS :	PRE IN / SPEAKER IN
Pre out FULL range (FRONT):	Yes
FRONT Ch. filters FULL:	Yes
Hi-Pass:	80 Hz @ 12 dB/Oct.
Lo-Pass:	50 ÷ 500 Hz @ 12 dB/Oct.
REAR Ch. filters FULL:	Yes
Hi-Pass:	80 Hz @ 12 dB/Oct.
Lo-Pass:	50 ÷ 500 Hz @ 12 dB/Oct.
FRONT Ch. MONO (on/off):	Yes
REAR Ch. MONO (on/off):	Yes
BOOST 50 Hz (select):	(0 / 6 / 12) dB

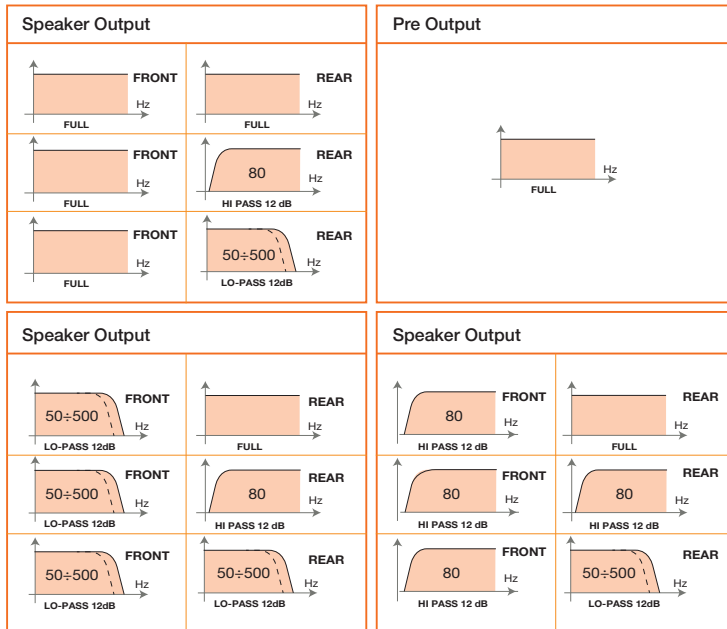
AMPLIFIER

HCP 4

760 W
MAX POWER

FOUR CHANNEL AMPLIFIER WITH CROSSOVER

Configurations



AMPLIFIER

HCP 4D **1160 W**
MAX POWER

FOUR CHANNEL D-CLASS AMPLIFIER WITH CROSSOVER



Power Supply

Power supply voltage / fuse:	11 ÷ 15 VDC / 2 x 20 A
Idling current (power ON/OFF):	1.6 A / 0.04 mA
Consumption @ 2 Ω, 14.4 VDC (Max Musical Power):	22 A
Remote In:	7 ÷ 15 VDC - 1 mA
ART™:	Automatic Remote Turn-On/Off with Speaker-In

Amplifier Stage

Features:	
Distorsion - THD (100 Hz @ 4 Ω):	0.02 %
Bandwidth:	10 ÷ 60K Hz
S/N Ratio (A weighted @ 1 V):	100 dB
Damping factor (100 Hz @ 4 Ω):	200
Pre-In sensitivity:	0.6 ÷ 5 VRMS (15 k Ω)
Speaker-In sensitivity:	1.5 ÷ 12 VRMS (47 Ω)
Load impedance (MIN)@ 4 Ch:	2 Ω
@ 3 Ch:	2 Ω + 2 Ω + 4 Ω
@ 2 Ch:	4 Ω

Output Power (RMS) @ 14.4 VDC, THD 1%:

4 Ch:	75 W x 4 (4 Ω)
4 Ch:	130 W x 4 (2 Ω)
3 Ch:	75 W x 2 (4 Ω) + 260 W x 1 (4 Ω)
3 Ch:	130 W x 2 (2 Ω) + 260 W x 1 (4 Ω)
2 Ch:	260 W x 2 (4 Ω)

Output Power (RMS) @ 14.4 VDC, THD 10%:

4 Ch:	85 W x 4 (4 Ω)
4 Ch:	145 W x 4 (2 Ω)
3 Ch:	85 W x 2 (4 Ω) + 290 W x 1 (4 Ω)
3 Ch:	145 W x 2 (2 Ω) + 290 W x 1 (4 Ω)
2 Ch:	290 W x 2 (4 Ω)

CEA 2006-A Ratings:

RMS Power (4 Ω, ≤1 %THD + N, 14.4 V):	70 W x 4 Ch
S/N Ratio (ref. 1 W output):	80 dBA



Size / Weight

Max size (mm / in.):	215 x 190 x 50 / 8.46 x 7.48 x 1.97
Weight (kg / lb.):	1,94 / 4.27

1. Compact design built from an extruded aluminum heatsink with the top side ensuring effective transfer of the heat generated by the power electronic components.
2. Special balanced input circuitry to reject electromagnetic disturbances present on the Pre-amplified or Speaker level inputs.
3. Input featuring both Speaker-In (OEM radio) and RCA-In (Aftermarket radio) inputs.
4. Selectable ART, Automatic Remote Turn-On/Off function, automatically turns on and off the amplifier when the OEM radio turns on and off (available on Speaker-In only).
5. Power supply stage featuring multiple winding transformer, Low-ESR 105°C capacitors, D-Class 2 Ω stable.
6. Pre-out, also available when using Speaker level inputs.
7. Mono operation mode (selectable) to realize a sub + front three-channel system or a powerful two-channel system.
8. Bass Boost (50 Hz) adjustable to 12 dB, to increase the subwoofer punch.
9. Lo-Pass and Hi-Pass 12 dB adjustable (50 Hz to 3200 Hz) filters, providing the ability to realize a front + rear system, a multichannel woofer + tweeter system or a powerful sub + front system.
10. Selectable full range power outputs.

Inputs / Outputs / Filter

INPUTS :	PRE IN / SPEAKER IN
Pre out FULL range (FRONT):	Yes
FRONT Ch. filters FULL:	Yes
Hi-Pass:	50 ÷ 3.2k Hz @ 12 dB/Oct.
Lo-Pass:	50 ÷ 3.2k Hz @ 12 dB/Oct.
REAR Ch. filters FULL:	Yes
Hi-Pass:	50 ÷ 3.2k Hz @ 12 dB/Oct.
Lo-Pass:	50 ÷ 3.2k Hz @ 12 dB/Oct.
FRONT Ch. MONO (on/off):	Yes
REAR Ch. MONO (on/off):	Yes
BOOST 50 Hz (adjust):	(0 ÷ 12) dB

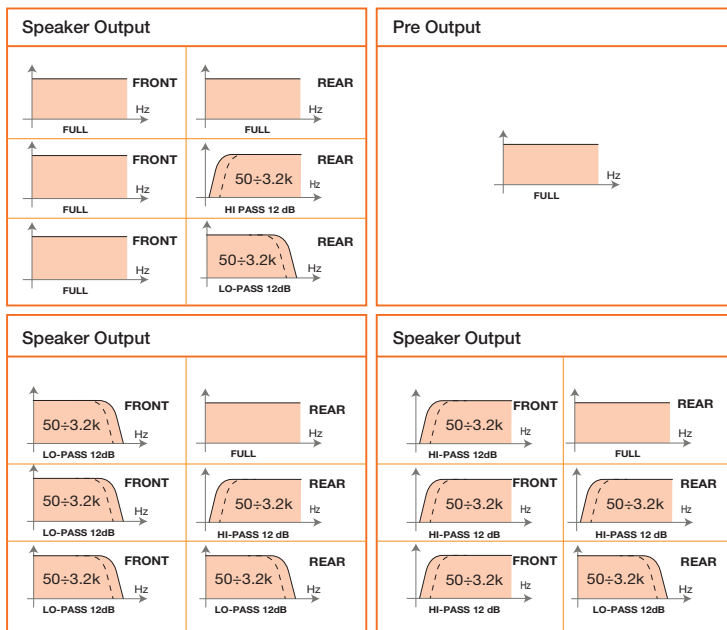
AMPLIFIER

HCP 4D

1160 W
MAX POWER

FOUR CHANNEL D-CLASS AMPLIFIER WITH CROSSOVER

Configurations



AMPLIFIER

HCP 5D 1500 W MAX POWER

FIVE CHANNEL D-CLASS AMPLIFIER WITH CROSSOVER

Power Supply

Power supply voltage / fuse:	11 ÷ 15 VDC / 2 x 25 A
Idling current (power ON/OFF):	2 A / 0.04 mA
Consumption @ 2 Ω, 14.4 VDC (Max Musical Power):	30 A
Remote In:	7 ÷ 15 VDC - 1 mA
ART™:	Automatic Remote Turn-On/Off with Speaker-In

Amplifier Stage

Features:	
Distorsion - THD (100 Hz @ 4 Ω):	0.02 %
Bandwidth FRONT/REAR:	10 ÷ 50k Hz
Bandwidth SUB:	10 ÷ 500 Hz
S/N Ratio (A weighted @ 1 V):	100 dB
Damping factor (100 Hz @ 4 Ω) FRONT/REAR:	100
Damping factor (100 Hz @ 4 Ω) SUB:	250
Pre-In sensitivity:	0.6 ÷ 5 VRMS (15 kΩ)
Speaker-In sensitivity:	1.5 ÷ 12 VRMS (47 Ω)
Load impedance (MIN)@ 5 Ch:	2 Ω
@ 3 Ch:	4 Ω + 4 Ω + 2 Ω
Output Power (RMS) @ 14.4 VDC, THD 1%:	
5 Ch:	55 W x 4 + 160 W x 1 (4 Ω)
5 Ch:	90 W x 4 + 280 W x 1 (2 Ω)
3 Ch:	180 W x 2 (4 Ω) + 160 W x 1 (4 Ω)
3 Ch:	180 W x 2 (4 Ω) + 280 W x 1 (2 Ω)
Output Power (RMS) @ 14.4 VDC, THD 10%:	
5 Ch:	65 W x 4 + 200 W x 1 (4 Ω)
5 Ch:	105 W x 4 + 330 W x 1 (2 Ω)
3 Ch:	210 W x 2 (4 Ω) + 200 W x 1 (4 Ω)
3 Ch:	210 W x 2 (4 Ω) + 330 W x 1 (2 Ω)
CEA 2006-A Ratings:	
RMS Power (4 Ω, ≤ 1 % THD + N, 14.4 V):	50 W x 4 Ch + 150 W + 1 Ch
S/N Ratio (ref. 1 W output):	(50 W Ch) 83 dBA (150 W Ch) 85 dBA



Size / Weight

Max size (mm / in.):	345 x 190 x 50 / 13.58 x 7.48 x 1.97
Weight (kg / lb.):	2,61 / 5.75



1. Compact design built from an extruded aluminum heatsink with the top side ensuring effective transfer of the heat generated by the power electronic components.
2. Special balanced input circuitry to reject electromagnetic disturbances present on the Pre-amplified or Speaker level inputs.
3. Input featuring both Speaker-In (OEM radio) and RCA-In (Aftermarket radio) inputs.
4. Selectable ART™, Automatic Remote Turn-On/Off function, automatically turns on and off the amplifier when the OEM radio turns on and off (available on Speaker-In only).
5. Power supply stage featuring multiple winding transformer, Low-ESR 105°C capacitors, D-Class 2 Ω stable.
6. 5 ch / 3 ch operation mode (selectable), to realize a five-channel system (with sub), or a powerful sub + front three-channel system.
7. Versatile front and rear filters, providing the ability to realize Hi-Pass front + rear system or multichannel woofer + tweeter system, both including sub.
8. Bass Boost (50 Hz) adjustable to 12 dB, to increase the subwoofer punch.
9. Selectable full range front + rear power outputs.
10. 24 dB continuously adjustable (50 to 500 Hz) Lo-Pass subwoofer filter.
11. SUBSONIC filter (24 dB - 25 Hz), removes very low subsonic frequencies from music signal to avoid damages to the subwoofer.
12. Optional Remote Volume Control (HRC) allows the user to adjust subwoofer level from dashboard.

Inputs / Outputs / Filter

INPUTS:	PRE IN / SPEAKER IN
FRONT Ch. filters FULL:	Yes
Hi-Pass:	50 ÷ 5k Hz @ 12 dB/Oct.
REAR Ch. filters FULL:	Yes
Hi-Pass:	50 ÷ 5k Hz @ 12 dB/Oct.
Band-Pass:	50 ÷ 500 Hz (Hi) @ 12 dB/Oct. 50 ÷ 5 kHz (lo) @ 12 dB/Oct.
SUB Ch. filter LO-PASS:	50 ÷ 500 Hz @ 24 dB/Oct.
SUBSONIC (on/off):	25 Hz @ 24 dB/Oct.
BOOST 50 Hz (adjust):	(0 ÷ 12) dB
Remote Volume Control:	(-50 ÷ 6) dB

AMPLIFIER

HCP 5D

1500 W
MAX POWER

FIVE CHANNEL D-CLASS AMPLIFIER WITH CROSSOVER

Configurations

Speaker Output			
5 Ch			
5 Ch			
5 Ch			
5 Ch			
5 Ch			
3 Ch			
3 Ch			



ABOUT US

Elettromedia, an Italian company, is a leader within the world-wide car Hi-Fi market. Born in 1987 in Potenza Picena by a group of friends who shared the same passion for in-car high fidelity, throughout the past years Elettromedia has been walking the path of excellence: its products are distributed in more than 50 countries; the company has received many awards and acknowledgements from the most authoritative leaders within the car audio industry; it also can boast reviews of more than 3000 pages published in 30 different languages (visit: www.elettromedia.it/press_area.asp).

The Elettromedia brands are Audison, Hertz, Connection and AZaudiocomp. Through a co-branding strategy, the company offers all of the components required for a complete, top-level car audio system.

CONTACTS:

Elettromedia s.r.l. Strada Regina km 3,500 - 62018 Potenza Picena (Mc) - Italy
T +39 0733 870 870 - F +39 0733 870 880 - www.elettromedia.it

AWARDS



Press Kit

(www.elettromedia.eu, Press Room)

HCP Product Information

(PDF version, 150 dpi resolution)

Logos: Hertz, HCP

(Adobe Illustrator version, 300 dpi resolution)

Photos (JPG version, 300 dpi resolution)



HCP 2



HCP 4



HCP 4D



HCP 1D



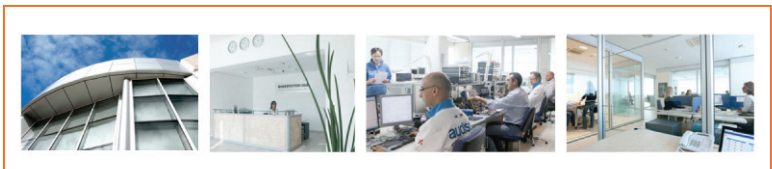
HCP 5D



HRC



Technologies



Elettromedia Headquarter